



Dennington Park Road NW6

Parkheath  
*Sold on Service*









## Dennington Park Road, NW6 £675,000 Leasehold

- Charming 2-bedroom apartment
- Raised ground floor of a period conversion
- Central West Hampstead location
- Bright and spacious reception/dining room with bay window
- Direct access to own section of the rear garden
- Semi open plan kitchen with appliances
- High ceilings
- Short walk to West Hampstead amenities and transport links
- EPC Rating: C, Council tax: Camden band E
- Chain free

Belsize Park/Hampstead  
208 Haverstock Hill  
NW3 2AG  
Sales 020 7431 1234  
Lettings 020 7431 3104  
[nw3@parkheath.com](mailto:nw3@parkheath.com)

South/West Hampstead  
192 West End Lane  
NW6 1SG  
Sales & Lettings  
Tel 020 7794 7111  
[192@parkheath.com](mailto:192@parkheath.com)

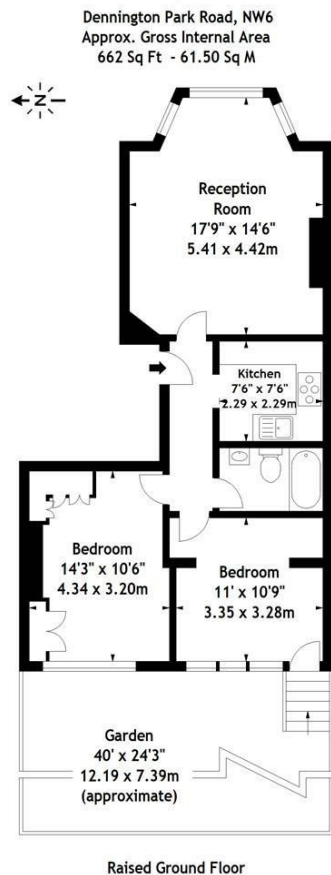
Kensal Rise  
54-56 Chamberlayne Rd  
NW10 3JH  
Tel 020 8960 4845  
[kensal@parkheath.com](mailto:kensal@parkheath.com)

Property Management  
192 West End Lane  
NW6 1SG  
020 7433 6174  
[pm@parkheath.com](mailto:pm@parkheath.com)

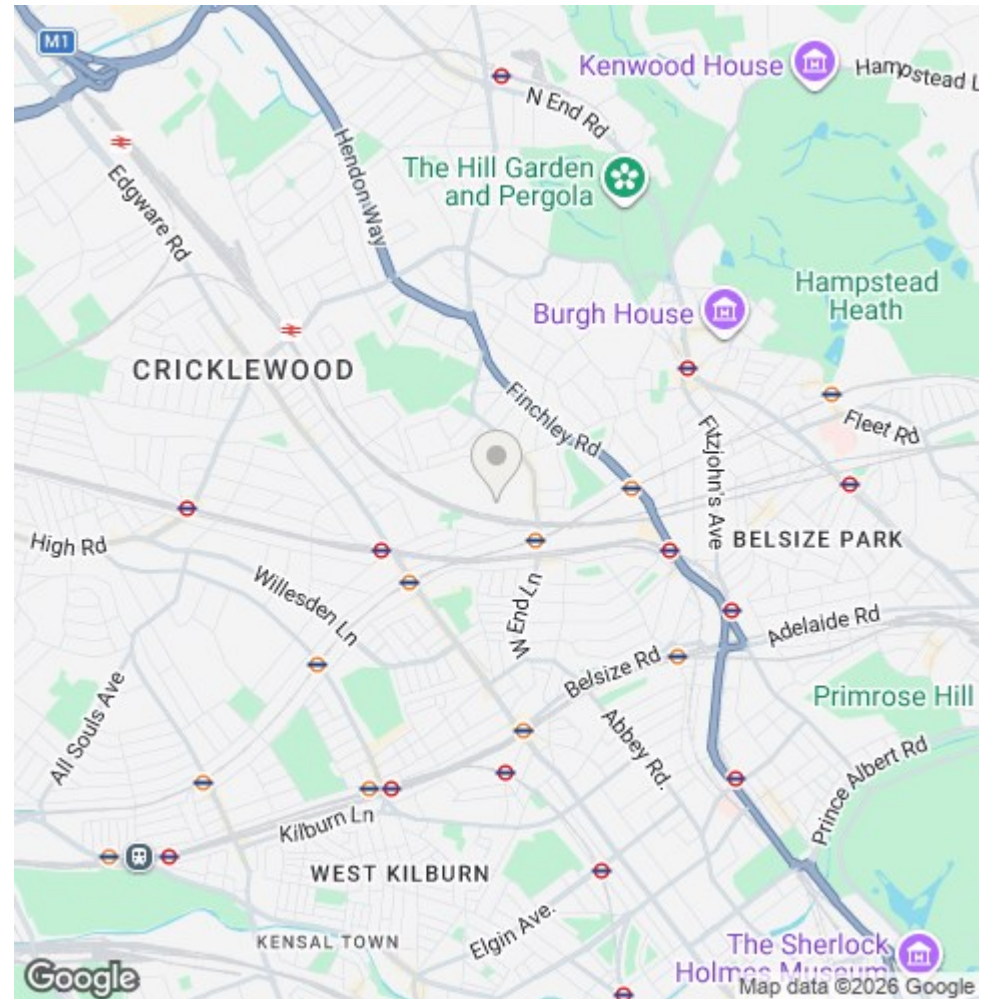
**Parkheath**  
*Sold on Service*

**Camden Tax band E**

[www.parkheath.com](http://www.parkheath.com)



Measured in accordance with RICS guidelines. Every attempt is made to ensure accuracy, however all measurements are approximate. This floor plan is for illustrative purposes only and is not to scale.  
 © Datography Ltd 2017  
 Photographs \* Floorplans \* Virtual Tours  
 Tel: 0845 643 4401 www.datography.com



The particulars do not constitute part of an offer or contract. The particulars, including text, photographs and plans, are for the guidance only of prospective purchasers/tenants and must not be relied upon as statements of fact. The descriptions provided therein represent the opinion of the author and whilst given in good faith should not be construed as statements of fact. Nothing in these particulars shall be deemed a statement that the property is in good condition or otherwise or that any services or facilities are in good working order. All measurements are approximate